

SolarInvert Energy Solutions

Will the battery still be over-discharged with BMS



Overview

The BMS also protects the battery from being overcharged, over-discharged, or operating outside its optimal temperature range. How many BMSs does a battery have?

Each battery comes with its own BMS. In parallel, you have three independent batteries and each has its own BMS.

Why do you need a battery management system (BMS)?

Overcharging can cause irreversible damage to batteries, leading to reduced capacity or even complete failure. With a BMS in place, it continuously monitors the voltage and ensures that it stays within safe limits. Furthermore, a BMS also helps balance individual cells within a battery pack.

Is BMS good for lithium ion batteries?

While it's true that BMS technology is commonly used in lithium-ion batteries, it can also be beneficial for other battery types such as lead-acid or nickel-based batteries. Regardless of the battery chemistry, overcharging can still occur and cause damage. 2. "BMS prevents overcharging by simply cutting off power."

Does a BMS prevent overcharging?

One key aspect of a BMS is its ability to prevent overcharging. Overcharging occurs when you continue to supply power to a fully charged battery, pushing too much current into it beyond its capacity.

Do batteries need a BMS?

Most batteries other than lithium-ion do not require a BMS for safe usage. Lithium batteries are unique in this way because they can easily catch on fire if the voltage, peak current, or temperature for an individual cell is not kept under control. Build your own DIY Powerwall safely with a UL recognized BMS!.

Can you build a battery pack with a BMS?

But you can also build a battery pack by assembling cells and adding a BMS. Most batteries other than lithium-ion do not require a BMS for safe usage. Lithium batteries are unique in this way because they can easily catch on fire if the voltage, peak current, or temperature for an individual cell is not kept under control.

Will the battery still be over-discharged with BMS



What Happens When a Lithium-Ion Battery Is ...

2 days ago · What Happens When a Lithium-Ion Battery Is Over-Discharged? Lithium-ion batteries are widely used in various applications, from portable ...

[Get Started](#)

Do You Need BMS for Lithium Batteries? (What ...

Sep 20, 2024 · Without a BMS, it would be very difficult to properly charge and discharge a LiFePO4 battery. The BMS ensures that the cells in the battery ...

[Get Started](#)



GEL Battery



Lithium Battery



Container storage system



Power Battery

How BMS Works on Batteries in EV: Boosting ...

Apr 9, 2025 · The Battery Management System (BMS) in electric vehicles monitors and controls key aspects of the battery's performance. It tracks ...

[Get Started](#)

Stop charging lifepo4 when battery is full

Feb 16, 2021 · if you'd have a system that would disconnect / disable the charger everytime the battery is full, then you'd be continuously first charging the battery, then charger goes off, then ...

[Get Started](#)



BMS settings for LiFePO4

Dec 19, 2022 · Temperature settings
Temperature limits: The BMS should be configured to prevent the battery from being charged or discharged outside of ...

[Get Started](#)



Can a BMS Prevent Overcharging in Lithium Batteries?

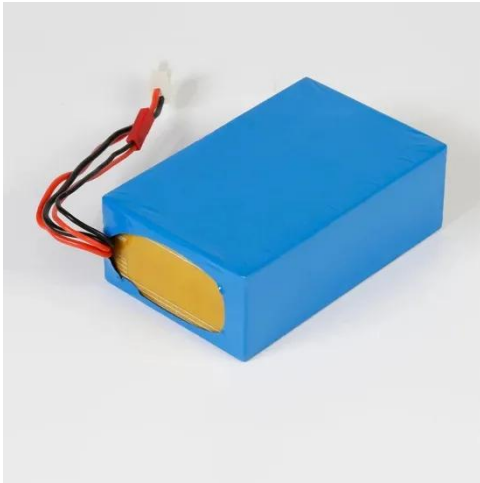
Can a BMS Prevent Overcharging in Lithium Batteries? Short A Battery Management System (BMS) actively monitors and regulates lithium battery charging to prevent overcharging. While ...

[Get Started](#)



If Li-Ion battery is deeply discharged, is it ...

Apr 10, 2015 · It is well known that Li-Ion



batteries should not be deep discharged. But sometimes they do discharge deeply. Is it OK for the device to ...

[Get Started](#)

How does the BMS ensure the safety of the ...

Dec 19, 2024 · A Battery Management System (BMS) plays a crucial role in ensuring the safety of battery cells, particularly in lithium-ion batteries. It ...

[Get Started](#)

APPLICATION SCENARIOS



How does a BMS handle cell over-discharge?

- Safety: Extremely low voltages may cause cell instability, thermal runaway, or venting. - System Reliability: Preventing over-discharge ensures reliable battery operation. 2. BMS Strategies for ...

[Get Started](#)



Can a Lithium Battery be Fully Discharged? Yes ...

Mar 20, 2021 · Page 1 of 2 - Can a Lithium Battery be Fully Discharged? Yes

& No - posted in Equipment (No astrophotography): There are a lot of posts on ...

[Get Started](#)



How does lithium battery BMS determine the ...

May 1, 2025 · BMS (Battery Management System) is an electronic system used to monitor, manage, protect and optimize battery packs. Its function is similar ...

[Get Started](#)

5 Reasons Why Lithium Batteries Should Not Be Fully Discharged

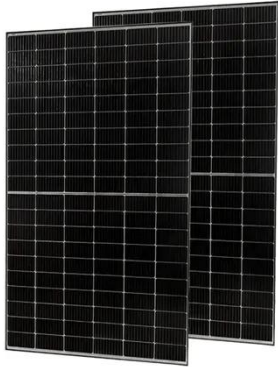
May 21, 2025 · When lithium batteries are fully discharged, the chemical reactions inside the battery can change, directly affecting its capacity. For example, if a 21700 battery is over ...

[Get Started](#)



What actually happens when lithium batteries ...

Oct 14, 2021 · Normally, protective measures ensure safety during the



charging process. However, what may happen when lithium batteries are overcharged ...

[Get Started](#)

What is a Battery Management System (BMS)?

Jan 15, 2025 · Discover the essential components of a Battery Management System (BMS) and how they ensure battery efficiency, safety, and longevity in ...



[Get Started](#)



What are the effects of overcharge and overdischarge on battery

Mar 3, 2021 · What is over-discharge and how does it affect battery performance? Over-discharge means that the battery has discharged the internally stored power, after the voltage reaches a ...

[Get Started](#)

Should You Reset Your Battery Management ...

Feb 4, 2023 · Your battery management system (BMS) is one of the most important components of your electric vehicle (EV). It's responsible for ...

[Get Started](#)



Exactly HOW does the BMS Stop the Charging Process?

Oct 26, 2023 · See this basic setup. How exactly does the BMS stop the charging process? It's not connected to the charger. Did I miss a component? How does it tell the charger to stop? Is ...

[Get Started](#)

What is BMS? Maximizes the Life of Lithium Batteries

Jan 6, 2025 · Without BMS, EVs would not perform as efficiently, and the lifespan of the battery would decrease faster. Optimizes range: Maximizes the amount of energy used from the ...

[Get Started](#)



Does Battery Management System Stop ...

Oct 28, 2022 · A battery management system (BMS) is a device that regulates the charging and discharging of a Li-ion

battery pack. It protects the battery ...

[Get Started](#)

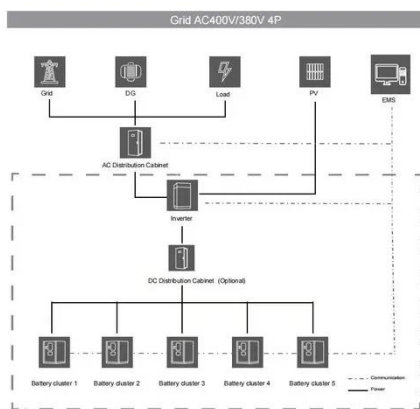


Battery Management System (BMS) Detailed Explanation: ...

May 7, 2025 · Battery Management System (BMS) is the "intelligent manager" of modern battery packs, widely used in fields such as electric vehicles, energy storage stations, and consumer ...



[Get Started](#)



Analyze the difference between lithium batteries with BMS

Aug 2, 2025 · The size of the 18650 lithium battery without BMS is shorter than that of the battery with BMS. Some devices cannot use the battery with BMS due to the initial design. Without ...

[Get Started](#)

Understanding Lithium Battery Over Discharge and Its ...

Mar 6, 2025 · Lithium batteries are a cornerstone of modern technology, powering everything from smartphones to electric vehicles. However, like any technology, they come with their own set ...

[Get Started](#)



- ✓ LIQUID/AIR COOLING
- ✓ INTELLIGENT INTEGRATION
- ✓ PROTECTION IP54/IP55
- ✓ BATTERY /6000 CYCLES



What is BMS? Maximizes the Life of Lithium Batteries

Jan 6, 2025 · From protecting your devices from overcharging to ensuring the cells last as long as possible, BMS is the reason your batteries stay safe, efficient, and long-lasting. Let's take a ...

[Get Started](#)

News

Aug 2, 2025 · The BMS also protects the battery from being overcharged, over-discharged, or operating outside its optimal temperature range. In battery packs with multiple series of cells ...

[Get Started](#)



Understanding Lithium Battery Over-Discharge ...

Mar 6, 2025 · A Battery Management System (BMS) is one of the most common methods of implementing over-



discharge protection. The BMS continuously ...

[Get Started](#)

BMS facts and how to charge lifepo4 without it!

Jan 31, 2010 · This article is in 2 parts:
part 1:direct comparison of sealed lead
acid batteries & lifepo4 part 2:BMS facts
and how to charge lifepo4 without it!
This article is about batteries and ...



[Get Started](#)



Will NOCO Gen 4 Battery Charger Work With Lithium Batteries?

Jul 31, 2025 · Yes, the NOCO Gen 4 battery charger works with lithium batteries--but only specific models. This versatile charger supports multiple battery types, including lithium-ion ...

[Get Started](#)

Can I revive a "Deeply Discharged" 200Ah 12V Smart Lithium Battery?

Oct 15, 2024 · 1) disconnect the BMS and loads completely from the battery for long term non-usage 2) use the remote switch to disable BMS (= using BMS's LB path to cut out loads) and ...

[Get Started](#)

Energy storage(KWH)

102.4kWh

Nominal voltage(Vdc)

512V

Outdoor All-in-one ESS cabinet



Can BMS Charging and Discharging ...

Sep 15, 2023 · In the dynamic environment of energy storage, the battery management system (BMS) has become a basic tool to control the charge ...

[Get Started](#)

BMS or no BMS for LiFePO4?

Feb 1, 2021 · Somewhere on the forum I believe Will Prowse said, "Considering the likelihood of over voltage situation from most high quality mppt, and the chance of matched LiFePO4 cells ...

[Get Started](#)



Complete Battery Management System (BMS) ...

Apr 22, 2025 · Explore how the Battery Management System (BMS) protects and optimizes your electric bike battery.

Learn detailed functions, maintenance ...

[Get Started](#)



6. Troubleshooting & support

Mar 17, 2025 · The BMS frequently disables the charger This is an indication that the battery is imbalanced. The charger will never be disabled by the BMS if the battery is well-balanced. ...

[Get Started](#)



The Complete Guide to A Battery Management ...

Aug 31, 2023 · Li-ion batteries are widely used for different applications. The materials' chemistry of li-ion can not withstand overcharge, over-discharge, ...

[Get Started](#)

Over-Discharge Protection in BMS

Jun 13, 2025 · One of the key functions of a BMS is to prevent over-discharge by monitoring the battery's state of charge

(SOC) and voltage, and taking corrective action when necessary. This ...

[Get Started](#)



Contact Us

For catalog requests, pricing, or partnerships, please visit:
<https://persianasaranda.es>