

SolarInvert Energy Solutions

Mobile base station communication frequency



Overview

In mobile communication, the frequency range used for mobile to base station transmission is typically in the range of 896-901 MHz. Why are base stations important in cellular communication?

Base stations are important in the cellular communication as it facilitate seamless communication between mobile devices and the network communication. The demand for efficient data transmission are increased as we are advancing towards new technologies such as 5G and other data intensive applications.

What is a mobile communication base station?

Mobile communication base station is a form of radio station, which refers to a radio transceiver station that transmits information between mobile phone terminals through a mobile communication exchange center in a certain radio coverage area.

Why is construction of mobile communication base stations important?

The construction of mobile communication base stations is an important part of the investment of mobile communication operators, and is generally carried out around factors such as coverage, call quality, investment benefits, construction difficulty, and maintenance convenience.

Are mobile communication signals becoming more complex?

In recent years, with the rapid deployment of fifth-generation base stations, mobile communication signals are becoming more and more complex. How to identify a.

What is a baseband radio unit?

The baseband unit is small in size and has a very flexible installation location. By integrating the transceiver, power amplifier and other intermediate radio frequency into another module called remote radio frequency, the radio

frequency unit RRU (Remote Radio Unit) is installed at the antenna end.

What is a base station?

What is Base Station?

A base station represents an access point for a wireless device to communicate within its coverage area. It usually connects the device to other networks or devices through a dedicated high bandwidth wire of fiber optic connection. Base stations typically have a transceiver, capable of sending and receiving wireless signals;

Mobile base station communication frequency



Mobile base station site as a virtual power plant for grid ...

Mar 1, 2025 · Despite the substantial electrical consumption of mobile networks, they are yet to harness their inherent flexibility for aiding in the stability of the power grid. A noticeable ...

[Get Started](#)

Base stations

Base stations are required to enable mobile phone communication, including calls and data transfer. They consist of different electronic components and antennas and can be located on ...

[Get Started](#)



Types and Applications of Mobile ...

Oct 11, 2024 · Mobile communication base station is a form of radio station, which refers to a radio transceiver station that transmits information between mobile ...

[Get Started](#)

gsm base station

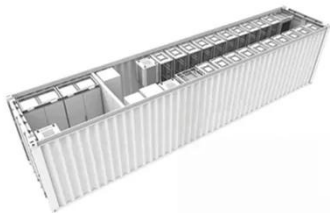
Nov 30, 2023 · The base station allocates radio channels to mobile devices for communication. GSM uses a combination of frequency division multiple access (FDMA) and time division ...

[Get Started](#)



 **TAX FREE**

**1-3MWh
BESS**



What Is A Base Station Antenna

Apr 22, 2024 · base station antenna is a crucial component of wireless communication networks, primarily used to facilitate the transmission and ...

[Get Started](#)

Types and Applications of Mobile ...

Oct 11, 2024 · In order to facilitate the distinction between the concepts and characteristics of different mobile communication base stations, Bone links will ...

[Get Started](#)



In mobile communication, the frequency range used for mobile to base

Feb 14, 2023 · The specific frequency range used for mobile to base station

transmission may vary depending on the type of network and the region, but the 896-901 MHz range is a ...

[Get Started](#)



Optimized Evaluation of Mobile Base Station by Modern ...

The study technique is used to evaluate and optimize the physical layout of the mobile base station to fulfill the optimal traffic demand in rush hours. It can be done by solving the topology ...



[Get Started](#)



BTS (base station transceiver)

Mar 6, 2023 · BTS, or Base Station Transceiver, is a critical component in modern mobile communication networks. BTS is responsible for transmitting and ...

[Get Started](#)

Mobile Phone Base Stations and RF Radiation

Jul 4, 2024 · IMDA works closely with the National Environment Agency (NEA), the national authority for radiation

protection, to ensure that RF radiation ...

[Get Started](#)



Mobile communications simply explained

Nov 3, 2020 · The main difference between the individual mobile phone generations lies in the speed of data transmission, i.e. the exchange of information between mobile phones and base ...

[Get Started](#)

VHF Base Stations for Long-Range Communication

What Is a VHF Base Station? A VHF (Very High Frequency) base station is a fixed communication device that operates within the 30 MHz to 300 MHz frequency range. Known ...

[Get Started](#)



51.2V 300AH

An Independent UAV-Based Mobile Base Station ...

Feb 22, 2025 · In disaster scenarios, e.g., earthquakes, tsunamis, and wildfires,



communication infrastructure often becomes severely damaged. To rapidly ...

[Get Started](#)

Timing & Synchronization technology adopted ...

1. GPS requirements The CDMA2000 standards specify to use the GPS timing for synchronization between base stations in a communication system, and the ...



[Get Started](#)



Green Base Station Solutions and Technology

Mar 20, 2011 · The green base station solution involves base station system architecture, base station form, power saving technologies, and application of ...

[Get Started](#)

Understanding Base Transceiver Stations: The Backbone of Mobile

Jan 1, 2025 · Introduction to Base

Transceiver Stations Base Transceiver Stations (BTS) form the backbone of mobile networks. They are integral in ensuring seamless connectivity and ...

[Get Started](#)



Evidence for a health risk by RF on humans living around mobile ...

Nov 1, 2022 · With the popularization of mobile communication, radio-frequency electromagnetic fields (RF-EMF) emitted from mobile phones, wireless routers, base stations, and other ...

[Get Started](#)

Mobile Networks Explained , Tarang Sanchar

Some base stations have radio communications dishes (shaped like a drum) that connect the base station to the rest of the base station network. What are ...

[Get Started](#)



(PDF) Evolution of mobile base station ...

Jul 1, 2007 · The rapid growth of mobile

communication technology and the corresponding significant increase in the number of cellular base stations ...

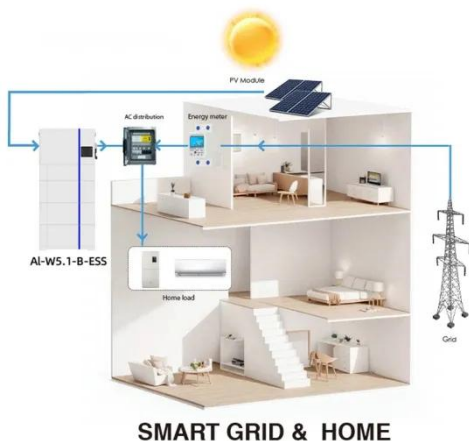
[Get Started](#)



What Is A Base Station?

Apr 22, 2024 · A base station is an integral component of wireless communication networks, serving as a central point that manages the transmission and ...

[Get Started](#)



Types of Base Stations

Jul 23, 2025 · Base stations are one of the widely used components in the field of wireless communication and networks. It is an access point or base point of a ...

[Get Started](#)

10 Best Ham Radio Base Station For Long Range ...

Dec 11, 2023 · Ham radio base station or transceiver come with more features over what mobile and handheld radios

offer. Nonetheless, though people love ...

[Get Started](#)



GSM Frequency Bands: Allocation and ...

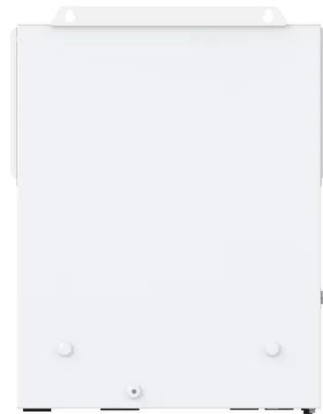
Jan 17, 2025 · GSM Frequency Bands: Allocation and Optimization Explained
The Global System for Mobile Communications (GSM) has been a ...

[Get Started](#)

What is a Base Station in Telecommunications?

Discover the role and functionality of a base station in telecommunications networks. Learn how these critical components manage communication ...

[Get Started](#)



A Dual-Frequency Combined Ambiguity Fixed Method for Mobile

May 5, 2022 · In recent years, with the construction of mobile communication



networks such as 5G, wireless positioning technology based on communication base stations has developed ...

[Get Started](#)

Base Stations

Jul 23, 2025 · Base stations are important in the cellular communication as it facilitate seamless communication between mobile devices and the network

...

[Get Started](#)



gsm base station

Nov 30, 2023 · A GSM (Global System for Mobile Communications) base station, also known as a BTS (Base Transceiver Station), is a critical component in a GSM cellular network. It provides ...

[Get Started](#)

The wireless communication frequency bands for Cellular Mobile ...

Solution: The wireless communication frequency bands for cellular mobile radio

are in the range of 896-901 MHz (mobile to base station) and 840-935 MHz (base station to mobile).

[Get Started](#)



✓ IP65/IP55 OUTDOOR CABINET

✓ WATERPROOF OUTDOOR CABINET

✓ 42U/27U

✓ OUTDOOR BATTERY CABINET

What is a base station?

Mar 4, 2021 · In telecommunications, a base station is a fixed transceiver that is the main communication point for one or more wireless mobile client devices.

[Get Started](#)

Contact Us

For catalog requests, pricing, or partnerships, please visit:
<https://persianasaranda.es>